

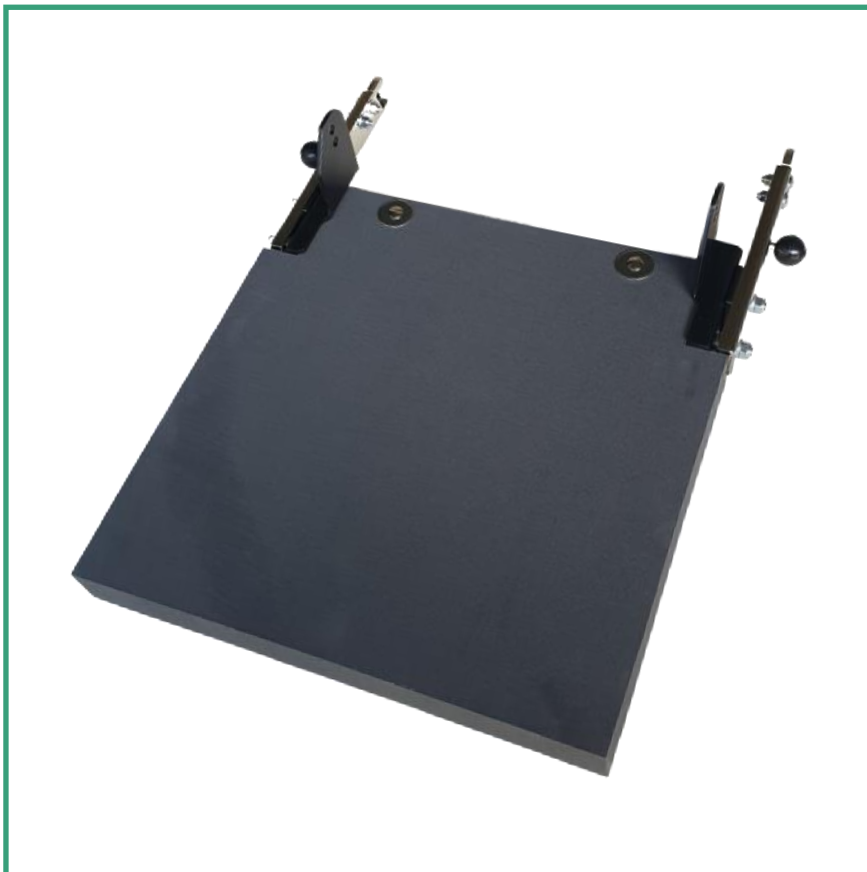
Instruction Manual

Read the instructions for use carefully before using the ISO-Base.

ISO-BASE

BASIC PLATE (without turning function) with ISOFIX connection

for Carrot 3 / Carrot XL



Issue 12/2023

Dear parents,

Thank you for the trust you have placed in us and for purchasing our product.

With the ISO-Base, you have chosen a particularly high-quality product. Due to its extremely solid construction, it can be used for many years. The installation should be carried out by your authorised dealer! He should instruct you on how to use the product before commissioning so that you can handle our product easily and safely and thus have a lot of pleasure with it.

Important information!

Make sure that these instructions for use remain with the product.

If you have any further questions, our team will be happy to help you at any time on (06721) 906 0 or with a video call. We look forward to any suggestions you may have for improving this product by email to info@rehanorm.de.

Have a good trip with ISO-Base

Yours

Andrea Staus and the RehaNorm team

Manufacturer:

RehaNorm GmbH & Co. KG,
Am Ockenheimer Graben 50,
55411 Bingen
Germany

Phone +49 67 21/90 60,
Fax +49 67 21/90 66 6,
E-Mail: info@rehanorm.de
www.rehanorm.de

Table of contents

Table of contents.....	2
Preparation	3
Warning and safety instructions.....	4
Features	5
Installation	6
Attaching Carrot 3 / Carrot XL to ISO-Base	6
Fixing to the car seat with ISOFIX connection	7
Removing the ISO-Base.....	7
Care and maintenance	7
Technical data.....	7
Warranty.....	8

Preparation

Delivery

Please check the product on receipt to ensure that it is complete and free of defects and check for any transport damage. Check the goods in the presence of the person who delivered them. If there is any transport damage, please arrange for an inventory (determination of defects) in the presence of the deliverer. Please send a written complaint to the responsible specialist dealer.

Safety precautions before use

To ensure the safe use of the ISO-Base, please read and observe the instructions for use and in particular the safety precautions. Correct use of the product requires precise and careful instruction of the user or accompanying person. Keep the instructions for use in a safe place. The instructions for use must always be with you when you give or lend the product to others. A warranty claim form is enclosed on the last page. Please keep it in a safe place so that you can present it in the event of a defect.

Safe disposal

To preserve and protect the environment, prevent pollution, and to improve the reuse of raw materials (recycling), recycle the raw materials used for the product according to their type separately at the end of the product life cycle.

Separate the packaging materials according to type for recycling.



Do not leave the packaging materials unattended as they are potential sources of danger.

Location of the instructions for use

Keep the instructions for use in a safe place and ensure that this remains with the product if it is used again. If you lose the instructions for use, you can download the latest version at any time from www.rehanorm.de.

Warning and safety instructions



Attention, serious and even fatal injuries can occur if the following instructions are not observed!

The following vehicle seats are **not** suitable for use with the ISO-Base:

- Car seats without an ISOFIX connection
- Car seats that are secured sideways or backwards,
- Car seats that are less than 40 cm deep,
- Car seats with a pronounced bulge on the seat, which can lead to unstable fastening,
- Car seats with a two-point harness.

What you should be aware of before using the ISO-Base

Please transport the child with the five- / four-point harness of the Carrot 3 / Carrot XL fastened and the three-point safety belt (restraint system) of the car. Conversion of the product is your responsibility. We are not responsible for any damage that occurs as a result of incorrect conversion. Only the accompanying person should operate the product. Only suitable for use in vehicles equipped with three-point safety belts. During installation, please ensure that no part of the ISO-Base can become trapped under a moving seat or in the door during normal use of the vehicle.

An incorrectly fitted ISO-Base can lead to a high risk of death or injury. Use only for children with special needs and only with the car seats described above. We recommend the seat behind the front passenger.

Regular checks are necessary when driving on bad roads and before and after a journey.

The instructions for use must always be included with the product. Do not forget this if you leave it to other people.

Ensure that the ISOFIX connection between the ISO-Base and the car seat is correctly engaged. This also applies when driving without a child in the car seat and even if no car seat is fitted on the ISO-Base, without locking the ISO-Base could injure passengers in the event of an accident.

Do not use a car seat that does not have an ISOFIX connection to ensure the safety of the child.

Secure your luggage so that it will not injure you in the event of an accident.

Never leave your child unattended in the car.

When you should not use the ISO-Base

Do not use the ISO-Base if you cannot attach it correctly as described in the instructions for use or if the ISO-Base is not firmly engaged on both sides even after it has been attached.

Do not use the product without an ISOFIX connection of the car seat. Do not use belts or seat shapes other than those described in the instructions for use.

To ensure safety, do not use the product if it has been involved in an accident.

Do not use the ISO-Base if it is attached to the passenger seat and prevents you from operating the gearshift or handbrake.

Do not use a seat belt that is damaged.

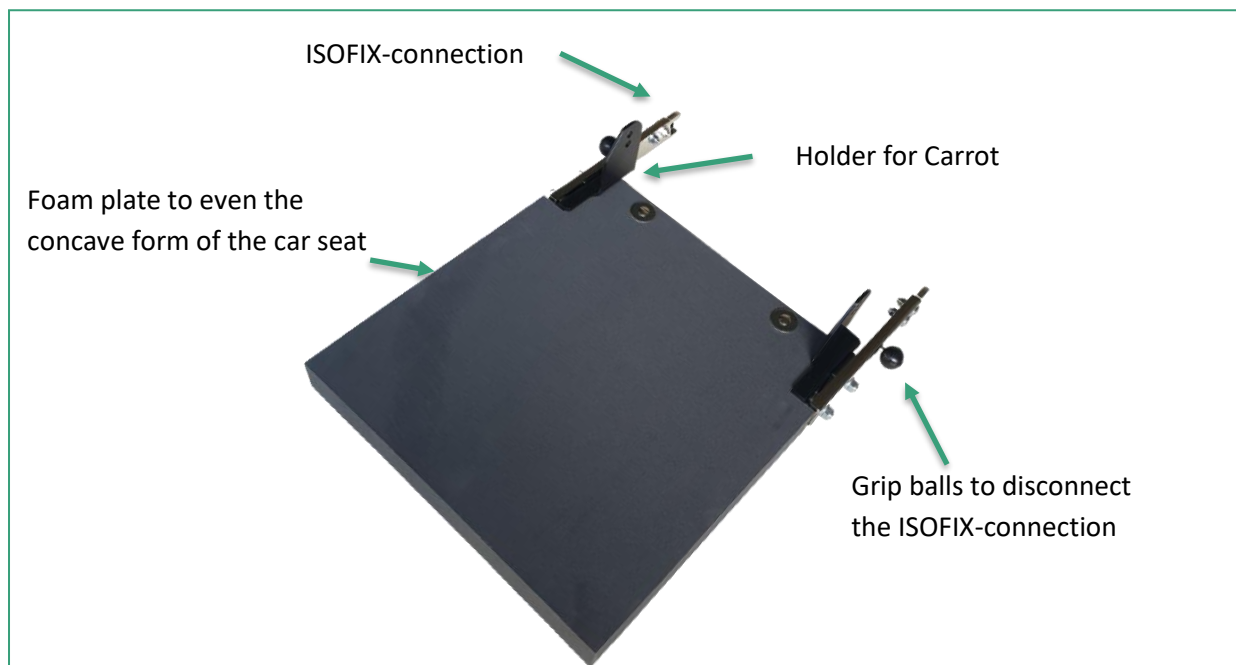
What also should be noticed

The ISOFIX connections cannot be solved easily. But you should still pay attention that nobody handle it improperly. If you have any further questions regarding to the use of this product or the repair work please do not hesitate to contact your dealer.

Features

Product overview

The illustration below shows the names of the most important components and the terms you will find when reading these instructions for use.



Scope of delivery

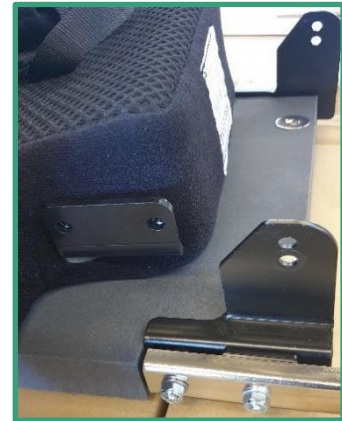
- ISO-Base
- Allen screws M6 x 30 mm (2 pieces)
- Plastic spacer M6 15 x 5 x 6,3 mm (2 pieces)



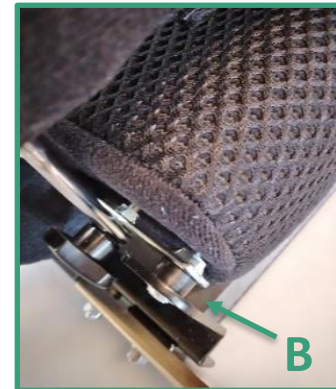
Installation

Attaching Carrot 3 / Carrot XL to ISO-Base

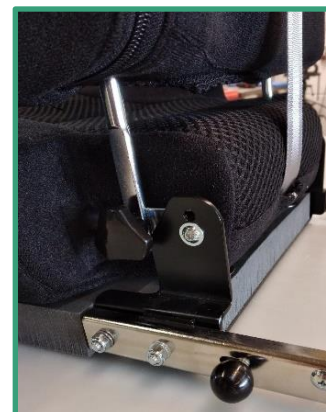
- First, loosen and remove the star grip screw **(A)** between the seat and back of the Carrot 3/ Carrot XL.
- Place the Carrot 3 / Carrot XL on the ISO-Base so that it sits between the brackets of the ISOFIX connection.
- Attach the Carrot 3 / Carrot XL to the ISO-Base using the star grip screw **(A)**, which holds the seat and back of the Carrot together.
- Use the bottom hole to secure the Carrot 3 and the top hole to secure the Carrot XL.



- Insert the enclosed plastic spacers **(B)** between the mount on the ISO Base and the Carrot frame section at the end of the seat section on the right and left between the frame section and ISO-Base.



- Tighten the screws firmly from both sides.



Fixing to the car seat with ISOFIX connection

- Place the ISO-Base with the attached Carrot 3/ Carrot XL on the car seat. Make sure that the ISOFIX connection of the ISO-Base and that of the vehicle are at the same height.
- Insert the ISO-Base into the ISOFIX connection of the car seat until it audibly clicks into place on both sides. The ISO-Base is now securely connected to the car.
- Then attach the headrest of the Carrot 3 / Carrot XL to the headrest of the vehicle using the upper fastening strap.



Removing the ISO-Base

- Unlock the snap locks of the ISO-Base by pushing the push handles on both sides in the direction of travel.
- Pull out the ISOFIX connection. You can now lift the ISO-Base together with the Carrot 3 / Carrot XL out of the vehicle.

Care and maintenance

Care

To maintain the functional reliability and appearance of the product, it must be maintained regularly. Never allow dirt to dry, but always remove it with water and a soft cloth or sponge. Do not use a high-pressure cleaner for cleaning.

Maintenance

Please carry out a daily visual inspection and check the ISO-Base regularly for missing parts, loose screws and malfunctions. In the event of a defect or malfunction, please contact the supplying specialist dealer directly.

Technical data

Product dimensions

L x B x H: 41,7 x 30,5 x 8,2 cm

Weight: 1 kg

Warranty

Warranty period

The warranty for this product is **24 months** from the date of purchase. Please keep the sales documents with the date of purchase.

In order to assert your warranty claims, please contact your specialist dealer, who will take all further necessary measures for you.

Warranty limitations

This warranty does not cover damage caused by negligence, incorrect and improper use or by the use of non-original parts or by incorrect handling because these instructions for use have not been observed. Damage caused by an accident is also excluded.

A warranty claim is also void if the name and stamp of the specialist dealer from whom you received the ISO-Base is not present on the warranty form or if you are unable to present the warranty form.

Form for warranty claims

Product model number:	ISO-Base basic plate
Name, first name:	
Street and house number:	
City:	
Postcode:	
Telephone number:	
E-mail address:	
Date of purchase:	
Distributor:	