

Multiroller Rehabuggy for children with walking difficulties

Instruction Manual

Read the instructions for use carefully before using the Multiroller.

MULTIROLLER



Dear Parents,

Thank you for choosing the **Multiroller**.

We kindly ask you to read the following instructions for use before using the **Multiroller**. This is the only way to ensure that your child can really ride safely in the **Multiroller**. The correct use of the **Multiroller** can make your everyday life much easier.

Your specialist dealer will be happy to help you with any necessary adjustments.

If you have any further questions, our team will be happy to help you at any time on (06721) 906 0 or with a video call. We look forward to any suggestions you may have for improving this product by email to info@rehanorm.de.

Have fun with your Multiroller Rehabuggy,

Yours

Andrea Staus and the RehaNorm team

EU Declaration of Conformity

We hereby declare that the product complies with the relevant provisions of Regulation (EU) 2017/745 (MDR) of 5 April 2017 concerning medical devices. The production takes place under the control of a quality management system according to DIN EN ISO 9001:2015 and DIN EN ISO 13485:2016, taking into account the regulations of Regulation (EU) 2017/745 (MDR) of 5 April 2017 concerning medical devices.

You will find our product identification on the lower rear cross tube.

Manufacturer:

RehaNorm GmbH & Co. KG,
Am Ockenheimer Graben 50,
55411 Bingen
Germany
Phone +49 67 21/90 60,
Fax +49 67 21/90 66 6,
E-Mail: info@rehanorm.de,
www.rehanorm.de



Table of contents

EU Declaration of Conformity	2
Table of contents	3
Warning and safety instructions	6
What to note before using the Multiroller:	6
What else to consider:	7
Re-use after an accident	7
Re-use following initial use	7
Purpose/indication	8
Risks of use/contraindications.....	8
Basic equipment	9
Assembly	10
Note	10
Delivery	10
Rear wheel installation	10
Front set installation	11
Unfold.....	11
Fold	12
Push bar adjustment.....	12
Accessories and functions	13
Front sets	13
Buggy set with two steerable front wheels and frame.....	13
Jogger set with single front wheel and frame	13
Offroad set with two front wheels and frame	13
Drum brake	14
Sling Seat.....	14
Integrated seat frame	15
Adjustment of the back angle	15
Adjustment of the seat angle.....	15
Adjusting the footrest angle.....	15
Adjusting the footrest height.....	16
Footrest 1	16
Kit for footrest	16
Footrest 2, for integrated seat frame.....	16

Headrest, Velcro.....	17
Insert cushion for slim children	17
Bag.....	17
Rain cover	18
Sun/rain canopy	18
Rain cover (for legs).....	18
Rain protection blanket hooged.....	19
Wind/rain protection with privacy screen	19
Anti-tipper.....	19
Other optional accessories.....	19
Back extension (150 mm) for sling seat	19
Back extension (150 mm) for an integrated seat frame	19
Cover for integrated seat frame.....	20
Trunk support on plate in the back	20
Insert cushion with trunk support cushion.....	20
Integrated seat plate for mounting seat adapters,	20
Adapter for car seat	20
Harness	20
4-point-belt.....	20
5-point-belt.....	20
2-point hip belt	20
Groin strap	20
Pommel on plate (Abduction wedge).....	20
Seat wedge made to measure	20
Footrest straps (pair).....	20
Care and maintenance.....	21
Cleaning and disinfection.....	21
Cover and upholstery	21
Frame and wheels	21
Checking for damage and functionality	21
Functionality test form	22
Technical data.....	23
Warranty	24
Warranty period.....	24
Warranty limitations	24
Form for warranty claims	24

Preliminary remarks:

Specialist dealers are requested to hand over these instructions for use to the user.

We would like to point out that the delivered product may differ from the one described here due to individual adjustments.

You can also download these instructions for use from the Internet www.rehanorm.de.

People with a visual impairment should have the contents read to them carefully and, if necessary, several times.

Warning and safety instructions



Attention, serious and even fatal injuries can occur if the following instructions are not observed!

What to note before using the Multiroller:

The assembly of the **Multiroller** parts before first use is carried out by the specialist dealer.

When unpacking your **Multiroller**, keep the packaging material away from children. Plastic packaging poses a risk of suffocation.

Please use the **Multiroller** only for persons weighing up to 75 kg.

Only one person may be placed in the **Multiroller**.

No one is allowed to stand on the footrest.

The **Multiroller** has been tested for slopes of up to 10 degrees. If the slope is greater, it could tip over.

Please note the information on the tyres. The air pressure on the rear tyres should be: 2.0 to 5.0 bar, on the front tyres: 2.0 to 2.5 bar.

Before each use, make sure that the quick-release axles of the rear wheels are engaged. Regular checks are necessary if you are riding on poor footpaths or forest tracks.

Bags and the like attached to the **Multiroller** increase the risk of tipping over.

Only accompanying persons who have read the instructions for use of the **Multiroller** and are not affected by cognitive impairments should operate the product.

Please never let your child sit in the **Multiroller** without supervision.

Please always lock the brake when you stop with the **Multiroller**, park it or when you put your child in or lift him/her out.

Please always secure your child with the appropriate restraint or positioning systems when sitting in the **Multiroller**. This prevents your child from falling out of the **Multiroller**, especially on bends or slopes. Above all, make sure that the **Multiroller** does not tip or roll away.

If your child is reaching for objects in front of, beside or behind him/her, make sure that he/she does not lean out far enough that the **Multiroller** could tip or fall over.

Watch out for obstacles and, if possible, drive around them or over them very slowly.

For kerbs and smaller obstacles, hold the push bar with both hands and carefully tip the **Multiroller** onto the rear wheels. Then push the **Multiroller** upwards onto the obstacle. To go downhill, carefully lower the **Multiroller**.

For safety reasons, only two people should climb stairs and carry the child over obstacles with passengers, otherwise there is a risk of the child falling out. We therefore recommend that you take your child out of the **Multiroller** beforehand.

Try to keep the **Multiroller** dry. If it does get wet, dry it as soon as possible.

After all adjustment work, retighten the previously loosened screw connections.

We recommend that you do not modify the **Multiroller** yourself. However, if you do so, this is your sole responsibility. We are not responsible for any damage that occurs as a result of incorrect conversion.

Due to the continuous development of the **Multiroller**, the content of these instructions may change.



Warning: The **Multiroller** is marked with the symbol showing that the buggy does not comply with WC19 (RESNAWC-4:2012 or ISO7176-19:2008) and cannot be used as a car seat to transport the user in a vehicle. The child must be seated in a car safety seat. Also ensure that the **Multiroller** is securely stowed in the vehicle and that this sticker, which is attached to the frame at the rear bottom right and left, is also observed by strangers.



What else to consider:

Do not use the **Multiroller** as a child's toy or as a chair for adults.

If you have any questions about the use of the **Multiroller**, please contact your dealer.

Note:

Do not use the **Multiroller** if it is defective.

Do not attempt to repair the **Multiroller** yourself.

When folding the **Multiroller**, be careful not to pinch or injure your fingers.

The expected service life is five years with average use.

Never use the buggy on escalators.

You should discuss disposal issues with your dealer, who knows the local conditions well.

If the tyres lose air or are flat, take the **Multiroller** to your dealer for repair.

The **Multiroller** must be checked and maintained as described in Maintenance and Care.



Warning: Check the buggy before putting a child in it. Check for loose parts, sharp edges, hot surfaces, loose straps, mechanisms that do not work properly or any other risks.

Re-use after an accident

To avoid injury from hidden damage, **do not use** the product after an accident.

Re-use following initial use

The **Multiroller** is suitable for reuse. Before reuse, the product must be cleaned, disinfected and approved for reuse by an authorised service centre. All worn and damaged parts and for the user inappropriate / unsuitable components must be replaced.

Purpose/indication

The **Multiroller** is suitable for ergonomic transfer indoors and outdoors of children who cannot move around under their own power due to an inability to walk or a severe walking disability.

Risks of use/contraindications

Risks of application can be excluded if the product is used properly. Contraindications are not known.

Basic equipment

Basic equipment:

- **Multiroller** frame incl. one pair of rear wheels (16" or 20"),
- front set (buggy, jogger or offroad),
- drum brake,
- seat unit (sling seat or integrated seat frame).



Assembly

Note

The assembly of the **Multiroller** parts before first use is carried out by the specialist dealer. If you wish to carry out the following assembly steps yourself after delivery by the specialist dealer, you may only do so as described below:

Delivery

Check the condition of the product and whether there is any damage to the packaging. Carefully remove the transport locks and the packaging. Take the **Multiroller** and the accessories out of the box.

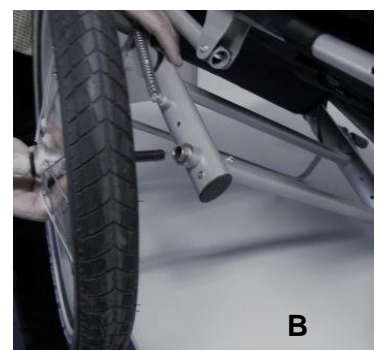
In the original packaging you usually get the foldable aluminium frame, seat unit and drum brake, which are already mounted at the factory, two rear wheels and one of the three front sets:

- Buggy set with two steerable front wheels (190x50),
- Jogger set with one 12" front wheel or
- Offroad set with two 16" front wheels
- Instruction manual



Rear wheel installation

- Hold down the push button of the supplied thru axles **(A)** and insert into the hub of the rear wheel.
- Once the axle is fully inserted in the hub, release the push button.
- Hold the wheel by the spokes, keeping the push button pressed with your thumb **(B)**.
- Now push the axle into the axle receptacle on the frame of your **Multiroller**. When the quick-release axle comes out again on the other side of the axle holder and the locking balls are visible, you can release the push button again.



Note: Make sure once again by pulling the wheels back and forth that they are really tight in the frame. Do the same with the second rear wheel.

Note: Make sure that the tyres always contain enough air pressure: Rear tyres: 2.0 to 5.0 bar, front tyres: 2.0 to 2.5 bar. Observe the maximum air pressure indicated on the tyre. The tyre pressure should be the same on both sides to guarantee safe wheel travel.

Front set installation

The front wheels are supplied together with the respective front set (see above).

- Now push the tubes of the set into the front tubes of the frame. It is important to keep the tubes parallel so that they do not become misaligned. If you do not succeed the first time, pull the set out again and try again, taking special care to insert the tubes parallel.
- Press the silver buttons so that they can disappear into the receiving tubes.
- Push the tubes of the set into the pick-up tubes until the silver-coloured heads of the tripod springs pop out again through the round holes in the pick-up tubes.



Note: Make sure that the knobs have popped out completely and that the front set is firmly mounted in the frame.

Unfold

Hold the **Multiroller** with one hand on the push bar and with the other hand on the front set. Carefully unfold the **Multiroller** until you hear a click on both sides of the frame. Then the folding joints are engaged.



Fold

To fold the **Multiroller**, please proceed as follows:

- Always secure the **Multiroller** by applying the drum brake before folding.
- Stand behind the **Multiroller** and simultaneously pull the plastic levers on the right and left below the push bar.
- Fold the upper part of the **Multiroller** forwards until the **Multiroller** lies folded on the ground.



Note: Please be careful not to pinch your fingers or those of another person.

To achieve the smallest possible pack size, it is recommended:

- Remove the rear wheels from the frame. Make sure that the brake is not tight.
- Remove the front set from the frame,
- Fold down the push bar so that it is almost parallel to the push tubes.

Note: When folding, please ensure that the seat cover does not get into the folding joint between the front and rear frames of the **Multiroller**, otherwise it will be damaged and the seat cover may tear.

Note: The first folding processes can be a little stiff because the screws and connecting elements have to settle first.

Push bar adjustment

- Adjust the angle of the push bar for your body size by pressing the push buttons on the ratchet joints at the same time and bringing the bar into the desired position.

Note: To avoid damage to the push bar, make sure that the push bar is in an upright position before folding the **Multiroller**. Otherwise the adjustment tube will hit the push bar and damage it.



Accessories and functions

Front sets

(Optional accessory)

Buggy set with two steerable front wheels and frame

Buggy set available in eight versions:

Buggy set (Narrow frame):

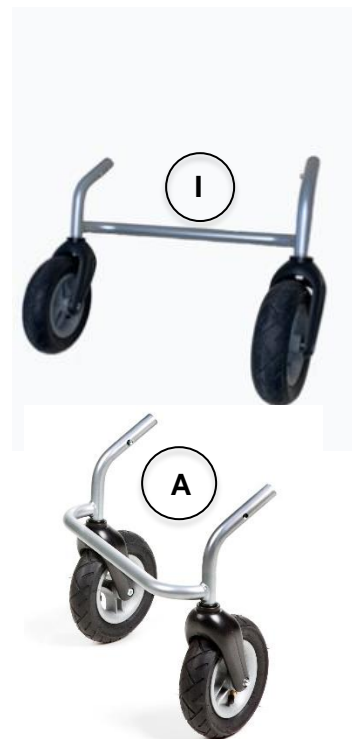
- Size 1 front wheels 190 x 51, 16" rear wheels, inner bracket **(I)**
- Size 2 front wheels 190 x 51, 20" rear wheels, inner bracket **(I)**

- Size 1 front wheels 190 x 51, 16" rear wheels, outer bracket **(A)**
- Size 2 front wheels 190 x 51, 20" rear wheels, outer bracket **(A)**

Buggy set (Wide frame):

- Size 1 front wheels 190 x 51, 16" rear wheels, inner bracket **(I)**
- Size 2 front wheels 190 x 51, 20" rear wheels, inner bracket **(I)**

- Size 1 front wheels 190 x 51, 16" rear wheels, outer bracket **(A)**
- Size 2 front wheels 190 x 51, 20" rear wheels, outer bracket **(A)**



Jogger set with single front wheel and frame

Jogger set available in four versions:

Jogger set 1:

- Narrow frame, 12" wheel (for 16" rear wheels)
- Narrow frame, 16" wheel (for 20" rear wheels)

Jogger set 2:

- Wide frame, 12" wheel (for 16" rear wheels)
- Wide frame, 16" wheel (for 20" rear wheels)



Offroad set with two front wheels and frame

Offroad set available in two versions:

- Narrow frame, 16" front wheels (for 16" or 20" rear wheels)
- Wide frame, 16" front wheels (for 16" or 20" rear wheels)



Drum brake

The drum brake is operated from the push bar through the brake handle.

- To lock the drum brake, pull the brake handle firmly.
- Press the rocker switch into one of the teeth with your fingertip and release the brake handle.
- If you pull the brake handle again, the rocker disengages and the brake is released.

After loosening the lock nut on the Bowden cable guide, the brake pre-tension can be adjusted by turning the Bowden cable guide in or out.

Note: After all adjustments have been made, retighten the previously loosened screw connections.



Sling Seat

(Optional accessory)

The seat is delivered pre-assembled when ordered for the first time. Remove the seat from the packaging (for repeat orders).

- Open the Velcro fasteners lengthwise on the right and left of the seat.
- Place the fabric seat around the upper main frame and close the Velcro again.
- Insert the upper strap into the tensioning buckle and tighten it. It must be above the upper cross bracing.
- Close the side fasteners for the Velcro on the left and right (small tension buckles on the back section).
- Place the Multiroller on the push bar and rear wheels so that you have good access to the two large tension buckles on the foot section and tighten these as well.

Note: Check again that all seat belt buckles of the sling seat are tightened and that protruding belts are secured.



Integrated seat frame

(Optional accessory)

The seat frame is delivered factory assembled. The angles of the seat, back and footrest can be adjusted.



Adjustment of the back angle

- Loosen the screw holding the bent tube,
- Set the desired angle of the back (maximum 40°).
- Tighten the screw again.



Adjustment of the seat angle

- Loosen the clamping lever below the seat (in front of the cross tube)
- Set the desired angle of the seat (maximum 40°).
- Tighten the clamping lever again.

A tripod spring prevents the adjustment tube from accidentally slipping out of the guide tube. This can be pressed so that the adjustment tube can be pulled out.



Adjusting the footrest angle

- Loosen the clamping lever at the front underneath the seat.
- Set the desired angle of the footrest (maximum 40°). A tripod spring limits the adjustment range.
- Tighten the clamping lever again.



Adjusting the footrest height

- Loosen two screws behind the black vertical tubes behind the footrest.
- Set the desired height of the footrest. It can be adjusted upwards or downwards by 14 cm (optionally 20 cm). A spring limits the adjustment range.
- Tighten the screws again.

If you need help, please contact your dealer.



Footrest 1

(Optional accessory)

Package contents: one footrest, two guide tubes with fastener.

Attach the footrest in the following order:

- Remove the front set.
- Also remove the two black plastic sockets.
- Slide the footrest onto the two front tubes and push the two plastic sockets back in.
- Attach the front set as described above.
- Set the correct height and then tighten the screws to secure it.
- If necessary, shorten the fabric cover in the calf area by folding the lower strap inwards.



Note: Please make sure that no one stands on the footplate. It is only intended as a rest for the feet while the patient is sitting in the **Multiroler**.

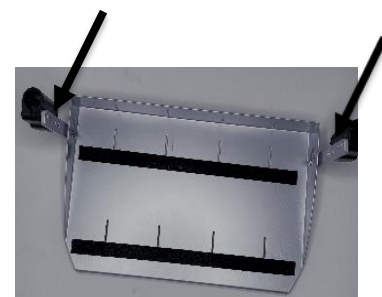
Note: Check the tight fit of the front set and its wheels from time to time.

Kit for footrest

(Optional accessory), Pair

Footrest kit for extending the lower leg length (only in combination with footrest 1) is available in two sizes (for Jogger strongly limited):

- Size 1 - Lower leg length extension 100-400 mm
- Size 2 - Lower leg length extension 100-490 mm

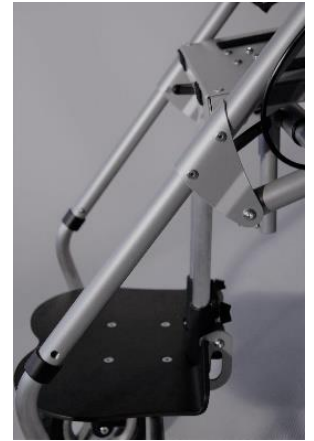


Footrest 2, for integrated seat frame

(Optional accessory)

Footrest 2 available in two sizes:

- For lower leg length of 20 to 27 cm (with jogger set: maximum 33 cm), swivels up from 90° to 30° in relation to the seat.
- For lower leg length from 20 to 34 cm (with jogger set: maximum 40 cm), can be swivelled upwards from 90° to 30° in relation to the seat.



Headrest, Velcro

(Optional accessory)

- Open the sling seat in the upper area and fix the headrest with the fleece straps



Insert cushion for slim children

(Optional accessory)

- Place the insert cushion in the sling seat,
- Open the sling seat in the upper area and fix the insertion cushion with the fleece straps.
- Pull the restraint straps or positioning systems through the openings/slots provided.



Bag

(Optional accessory)

Bag allows you to carry small items when walking, attaches under the seat.

- Fix to the front left and right of the frame with Velcro tape on both sides.
- Fix at the back of the cross tube at three points with Velcro tape on both sides.

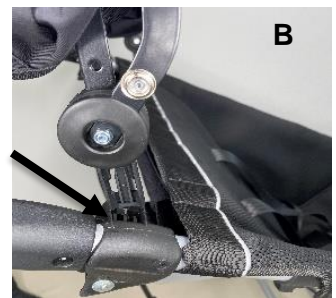
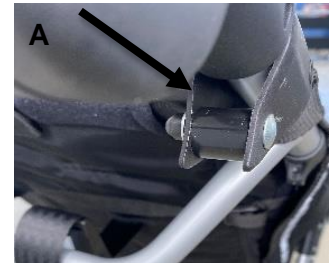


Rain cover

Sun/rain canopy

(Optional accessory)

- Hold the sun canopy in the end position over the seat of the **Multi roller**.
- Put the holder on both sides on the frame below the adjustment joint of the push bar and secure the hold with the supplied screws as follows:
- Hold the spacer between the two wings and insert the screw through the spacer and through both wings **(A)**.
- Then fix the screws with the nuts supplied and tighten them well.
- Once both sides are well fastened, you can now easily put the sun canopy on the brackets and remove it **(B)**.
- Make sure that the brackets of the sun canopy are attached to the inner side of the brackets.



Note: The sun canopy must be removed before folding.



Attention: With fixed seat only applicable with back inclined

Rain cover (for legs)

(Optional accessory)



- Fix the top left and right at the desired height on the sling seat with Velcro tape on both sides **(A)**.
- Fix at the bottom left and right of the front set with Velcro tape on both sides **(B)**.

Rain protection blanket hooped

(Optional accessory)

- Fix at the bottom left and right of the front set with Velcro tape on both sides.



Wind/rain protection with privacy screen

(Optional accessory), special construction

- Attaches to the sun/rain canopy with the help of a zip.



Anti-tipper

(Optional accessory)

The anti-tipper prevents the **Multiroller** from tipping backwards when overcoming obstacles and slopes.



Warning: Ensure that a mounted anti-tipper is activated before driving over obstacles and on slopes.

The anti-tipper may only be adjusted by qualified personnel.



Other optional accessories

Back extension (150 mm) for sling seat

Back extension (150 mm) for an integrated seat frame due to longer back strap, no change of cover necessary.

Cover for integrated seat frame

Trunk support on plate in the back

Insert cushion with trunk support cushion

Integrated seat plate for mounting seat adapters,
infinitely adjustable open seat angle, back held by infinitely adjustable bracket, seat 95° to 135°, back 185° to 225°

Adapter for car seat

Harness

4-point-belt

5-point-belt

2-point hip belt

Groin strap

Pommel on plate (Abduction wedge)

Seat wedge made to measure

Footrest straps (pair)

Note: These accessories are custom-made products that can only be manufactured after prior consultation with the patient/customer. They should only be fitted by qualified personnel.

Care and maintenance

Cleaning and disinfection

Cover and upholstery

The fabrics used are flame retardant according to DIN EN 1021 1 and 2.

- To clean the cover, use a sponge, maximum 30 degree warm water and a mild soap.
- Do not use a washing machine, tumble dryer or iron.
- Do not use fabric softener and do not dry clean fabric items
- Cleanliness is important, but washing can damage the fabric.
- If damaged, the fabric should be replaced.
- Dry the items lying on a drying rack in a well ventilated room
- If body secretions have penetrated the cover, disinfect these areas generously with a household disinfectant (e.g. Sagrotan or similar).

Frame and wheels

- Please do not use harsh abrasives to clean the frame and the wheels of the **Multiroller**.
- Use a damp, soft cloth with diluted dishwasher detergent.
- For disinfecting, use a surface disinfectant. Spray a frame and then wipe it with a soft cloth until it is dry. Do not use a steam cleaner to clean the chassis.
- Please take from time to time the rear wheels from the frame and check the condition of the quick-release axles. The quick-release axles should be cleaned with a cloth and lightly brushed with ball bearing grease to prevent corrosion caused by humidity and rain.

Checking for damage and functionality

Always check the functionality of the adjustment and safety elements of the **Multiroller** before each use:

- Damage to the frame, add-on parts and accessories (cracks, breaks, corrosion, bent or missing parts).
- Damage to upholstery and covers
- Damage to the harness (clamping devices, fasteners, seams)
- Strength of connections (loose screws or missing screws)
- Functionality of all adjustment elements (screws, release lever, backrest, pads, foot-rest)
- Functionality of the safety elements (drum brakes)
- Legibility of the type plate

Please contact your specialist dealer if you detect any defects during this inspection.

The tests described in the following instructions are to be carried out by the user at the specified intervals. Required tools - Allen wrench (Allen key of 4 and 6 mm).

Functionality test form

Examination	Daily	Weekly	Monthly
Functional test brake	X		
Examination of Velcro connections	X		
Inspection of screws connections		X	
Air pressure (indicated on the tire casing)		X	
Visual inspection of wearing parts such as wheels and bearings			X
Dirt on bearings			X

All maintenance and servicing tasks not listed here must be carried out by an authorised dealer.

Tools required for assembly and maintenance work:

- a flat screwdriver
- phillips screwdriver
- two 9 mm end wrench (for drum brakes)
- a 10 mm end wrench
- a 11 mm end wrench
- a 17 mm end wrench
- a 19 mm end wrench
- a 24 mm end wrench
- a 3 mm Allen key
- two 4 mm Allen keys
- a 5 mm Allen key
- a 6 mm Allen key
- a 20 mm Torx key

Technical data

	Narrow frame (dimensions in cm)		Wide frame (dimensions in cm)	
	Gr. 1 Drive wheels 16"	Gr. 2 Drive wheels 20"	Gr. 3 Drive wheels 16"	Gr. 4 Drive wheels 20"
Height total	102	107	102	107
Width total	68	68	73	73
Length total				
- Buggy	116 to 135	116 to 135	116 to 135	116 to 135
- Jogger	136 to 151	155 to 170	136 to 151	155 to 170
- Offroad	128 to 143	120 to 135	128 to 143	120 to 135
Minimum turning circle:				
- Buggy	122	122	132	132
- Jogger	142	142	152	152
- Offroad	134	134	154	154
Height push handle	86 to 116	86 to 120	86 to 116	86 to 120
Footrest 1 W x L	38 x 23	38 x 23	43 x 26	43 x 26
Measures folded H x W x L	34 x 56 x 84	34 x 56 x 84	30 x 63 x 88	30 x 63 x 88
Maximal user weight	75 kg	75 kg	75 kg	75 kg
Weight with sling seat starting from	9 kg	9 kg	10 kg	10 kg
Sling seat				
- Height of back	58	58	58	58
- Depth of seat	33	33	33	33
- Width of seat	30 – 38 (in front)	30 – 38 (in front)	35 – 43 (in front)	35 – 43 (in front)
- Width of the back	30 – 40 (at the top)	30 – 40 (at the top)	30 – 45 (at the top)	30 – 45 (at the top)
Integrated seat frame				
- Height of back	62	62		
- Depth of seat	30 - 35	30 - 35		
- Width of seat	38	38		
- Width of the back	38	38		
- Back adjustment in degrees	185° to 225°	185° to 225°		
- Seat adjustment in degrees	95° to 135°	95° to 135°		
- Lower leg length	20 – 30	20 – 30		
- Footrest 2 W x L	30 x 20	30 x 20		
- Footrest 2 adjustability in degrees	90° to 30°	90° to 30°		

Warranty

Warranty period

The warranty for this product is 24 months from the date of purchase. Please keep the sales documents with the date of purchase.

In order to assert your warranty claims, please contact your specialist dealer, who will take all further necessary measures for you.

Warranty limitations

This warranty does not cover damage caused by negligence, incorrect and improper use or by the use of non-original parts or by incorrect handling because these instructions for use have not been observed. Damage caused by an accident is also excluded.

A warranty claim is also void if the name and stamp of the specialist dealer from whom you received the Multi-roller is not present on the warranty form or if you are unable to present the warranty form.

Form for warranty claims

Product model number:	Multiroller
Name, first name:	
Street and house number:	
City:	
Postcode:	
Telephone number:	
E-mail address:	
Date of purchase:	
Distributor:	